



### Standard Housing Design

- Welded carbon steel construction—other materials available on request
- ASME Code, Section VIII construction, stamped and certified
- Design pressure: 250 psi @ 250 °F (17.2 bar @ 121 °C)
- Main closure: Blind Flange
- Head gasket: Buna-N —other materials available on request
- Vent connection: ¾" NPT
- Drain connection: ¾" 3000# NPT
- Inlet and outlet connections: 2" 3000# NPT
- Differential pressure gauge connection: ½" NPT
- Interior: Epoxy coated (EI 1541)
- Exterior: Prime coated

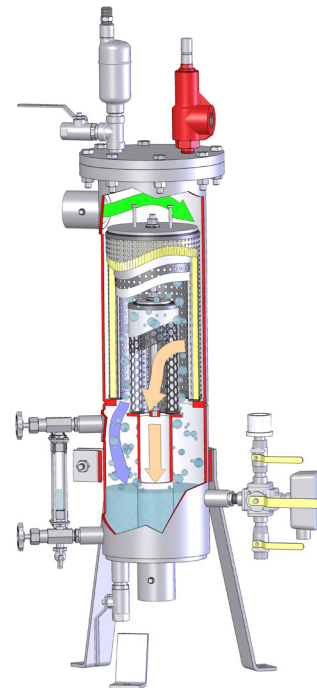
### Options

- Air eliminator
- Air eliminator check valve
- Manual drain valve
- Pressure gauge assembly
- Pressure relief valve
- Sampling probes
- Adjustable support stand

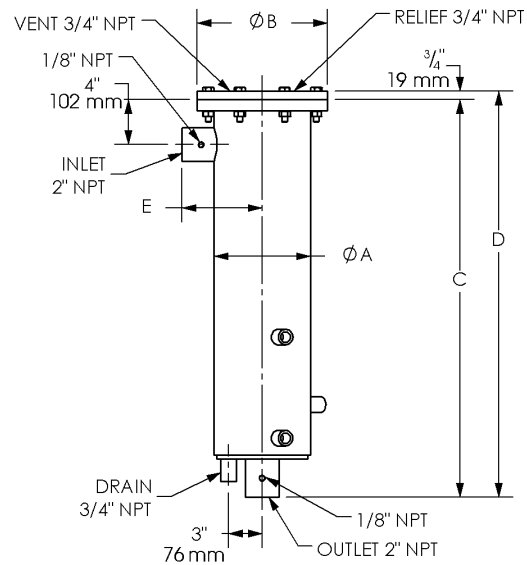
Facet's standard carbon steel VCS Series SuperFlex™ Coalescer Separators are small, economical housings for in-line removal of water and solids from aviation fuels where water content is a problem. Using Facet high quality coalescer and separator cartridges, they provide the best water and solids removal.

### Reliable Performance

Facet coalescer separators are a result of over 75 years of continuous research and development to meet the ever demanding performance requirements in the aviation fuel handling industry. This, along with proven field performance, demonstrates Facet's ability to provide quality products that meet current specifications as well as specific customer requirements for installations in refineries, bulk storage, terminals, heliports, airports, etc.



# Vertical SuperFlex™ Coalescer Separator



## DATA

MODEL NUMBER	INLET/OUTLET DIAMETER		DIMENSIONS										WEIGHT		LIQUID VOLUME	
			A		B		C		D		E					
	in	mm	in	mm	in	mm	in	mm	in	mm	in	mm	lbs	kg	gal	ltr
VCS-123-7-1S412FC	2	51	8 <sup>5</sup> / <sub>8</sub>	219	11 <sup>5</sup> / <sub>8</sub>	295	35 <sup>3</sup> / <sub>8</sub>	899	36 <sup>1</sup> / <sub>8</sub>	918	7 <sup>1</sup> / <sub>8</sub>	181	100	45	7	26
VCS-223-7-1S422FC	2	51	8 <sup>5</sup> / <sub>8</sub>	219	11 <sup>5</sup> / <sub>8</sub>	295	49 <sup>7</sup> / <sub>8</sub>	1267	50 <sup>5</sup> / <sub>8</sub>	1286	7 <sup>1</sup> / <sub>8</sub>	181	125	56	10	38
VCS-323-7-1S432FC	2	51	8 <sup>5</sup> / <sub>8</sub>	219	11 <sup>5</sup> / <sub>8</sub>	295	63 <sup>5</sup> / <sub>8</sub>	1622	64 <sup>5</sup> / <sub>8</sub>	1641	7 <sup>1</sup> / <sub>8</sub>	181	150	68	13	49



CC-23-7 Coalescer

SS412FC Separator

### Standard Design Features

- Provides two-stage coalescing and separation
- Recommended maximum operating temperature: 240 °F (115 °C)
- Maximum differential pressure: 75 psi (5.17 bar)
- pH range from 5 to 9
- Flow direction: Outside to in
- All metal components coated to protect against corrosion
- Standard gaskets are Buna-N—other materials available on request

### DIMENSIONS

MODEL NUMBER	OD		ID		LENGTH		WEIGHT	
	in	mm	in	mm	in	mm	lbs	kg
<b>COALESCER</b>								
CC-23-7	7 <sup>5</sup> / <sub>8</sub>	194	5 <sup>5</sup> / <sub>8</sub>	143	13 <sup>1</sup> / <sub>16</sub>	348	4	1.8
<b>SEPARATOR</b>								
SS412FC	4 <sup>1</sup> / <sub>8</sub>	105	1 <sup>7</sup> / <sub>8</sub>	48	11 <sup>1</sup> / <sub>2</sub>	292	3	1.4
SS422FC	4 <sup>1</sup> / <sub>8</sub>	105	1 <sup>7</sup> / <sub>8</sub>	48	21 <sup>1</sup> / <sub>2</sub>	571	6	2.7
SS432FC	4 <sup>1</sup> / <sub>8</sub>	105	1 <sup>7</sup> / <sub>8</sub>	48	31 <sup>1</sup> / <sub>2</sub>	800	9	4.1

### FLOW RATES & ELEMENT MODELS

MODEL NUMBER	QTY	ELEMENTS		KEROSENE		AVIATION FUEL <sup>(1)</sup>		GASOLINE		DIESEL		
		COALESCER	SEPARATOR	gpm	lpm	gpm	lpm	gpm	lpm	gpm	lpm	
VCS-123-7-1S412FC	1	CC-23-7	1	SS412FC	37	140	25	94	55	208	27	102
VCS-223-7-1S422FC	2	CC-23-7	1	SS422FC	75	284	50	189	100	378	42	159
VCS-323-7-1S432FC	3	CC-23-7	1	SS432FC	112	424	75	284	168	636	68	257

1) Tested to meet the effluent requirements of EI 1581, 6th Edition, Category C & M, Type S-LW (Jet Fuel and AV-Gas).